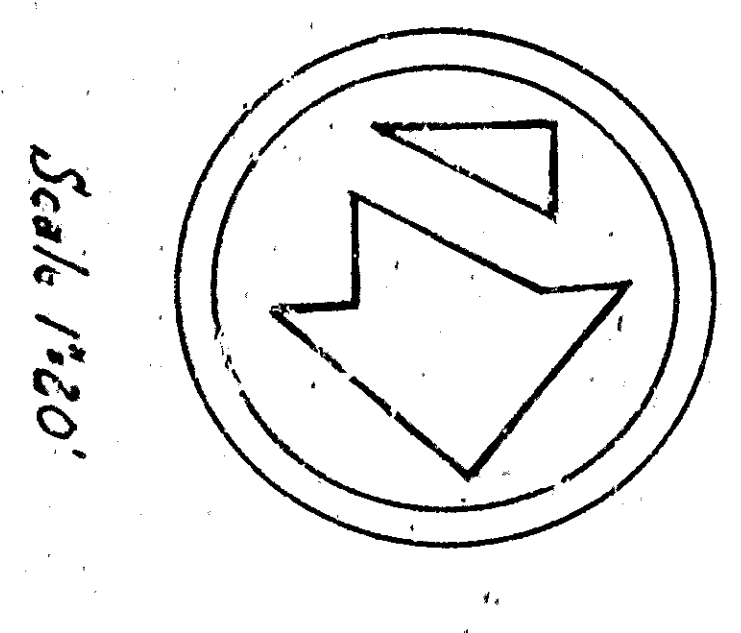


GENERAL NOTES

1. All work included on this plan shall be done in conformity with applicable provisions of Standard Specifications No. 227 and Standard Drawing No. 251 as file in the Office of the City Engineer.
2. Obstructions (Markings on Plan)
3. Retain
4. Remove

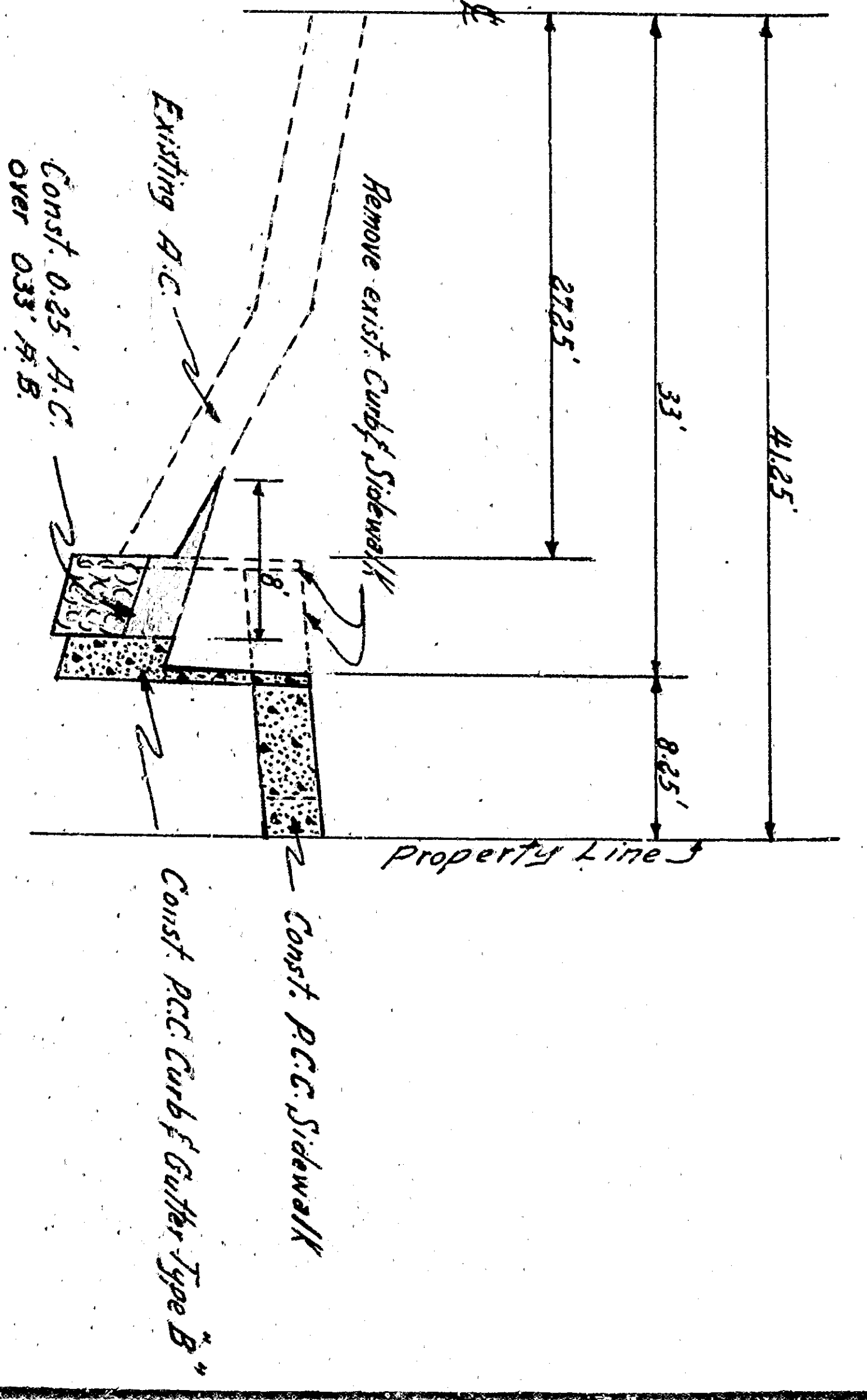
BENCH MARK
 See in site corner of 21st St and E Street
 EL. 1163.88 M.S.L.



Scale 1/20'

TYPICAL SECTION E-ST

Scale Vert 1/20'



APPROVED	DATE	BY	DEPARTMENT OF ENGINEERING
REGISTERED CIVIL ENGINEER	NOV 1967	W. J. JAMES	CITY OF SAN BERNARDINO
DRAWING NO.	DESIGNED BY	DRAWN BY	E STREET
3532	W. J. JAMES	W. J. JAMES	Between 21st Street and a Court Hook
SHEET 1 OF 2 SHEETS	CHECKED BY	APPROVED BY	Curb, Sidewalk, & Driveway